

Gasket Insulating Sets

Technical Details

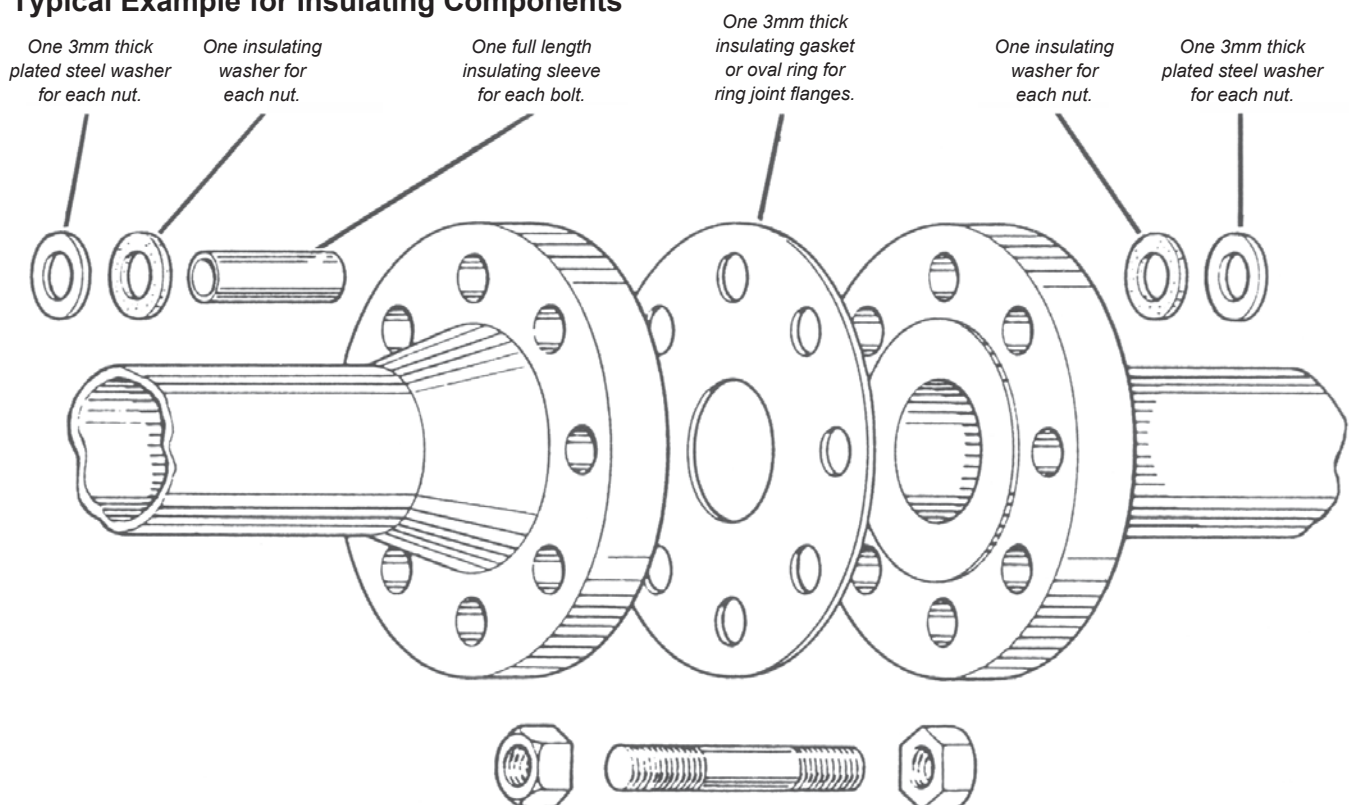
Component		1	2	3	4	5	6
Dielectric Strength	Volts/Mil.	500	200	400/500	140	4000	1500
Compressive Strength	N/mm ²	250	250	-	-	-	180
Flexural Strength	N/mm ²	150	150	-	-	-	-
Water Absorption	%	1.6	1.0	0.01	1.0	0.8	10.6
Max. Operating Temperature	°C	107	107	66	107	180	300

Component Key	Material
1 • Type E and F Central Gasket	• 3.2 mm Neoprene faced phenolic
2 • Insulating Washer	• 3.2 mm Reinforced phenolic
3 • Insulating Sleeve	• 3.2 mm Polyethylene
4 • Insulating Sleeve	• 3.2 mm Phenolic
5 • Insulating Sleeve	• 3.2 mm Mylar
6 • Type E and F Central Gasket	• 3.0 mm Compressed Non-Asbestos - KLINGERSil C4430
	• 3.0 mm Steel Zinc plated with clear passivate

What are they?

- Designed to minimise the effects of electro chemical erosion.
 - Used to isolate sections of pipework.
 - Made from materials with high dielectric strength.
 - Each set comprises of:
 - One central flat or oval section gasket.
 - One insulating sleeve per bolt.
 - Two insulating and two plated steel washers per bolt.
- Individually packed and clearly labelled with the flange rating, size, type and material combination.
- Manufactured to suit flanged joints to ANSI, BS, DIN and customer designs.

Typical Example for Insulating Components



Further Protection

It is recommended that PVC tape be wrapped around the outside of the flange to prevent the ingress of conductive matter.

Ordering Information

When ordering please submit the following details:

- Flange pressure class and standard.
- Nominal pipe size.
- Type E, F or D central gasket.
- Type of insulating material required for central gasket and sleeves.

Our Product Range

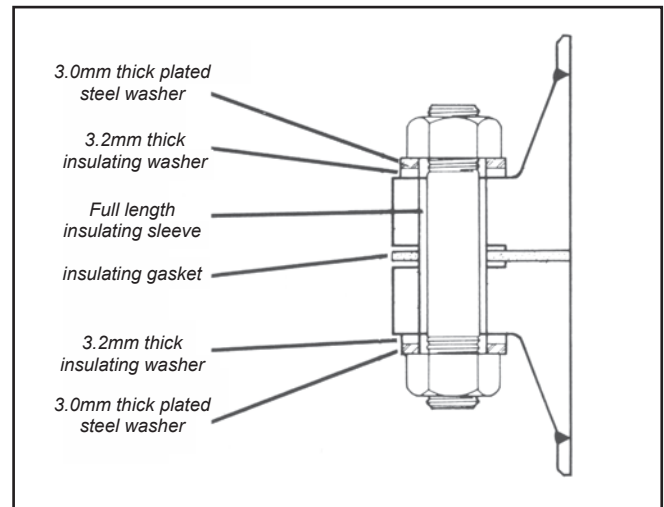
- "Maxiflex" Spiral Wound Gaskets
- Heat Exchanger Gaskets
- Solid Metal Gaskets
- Ring Joint Gaskets
- Soft Gaskets
- Gasket Jointing
- PTFE Products
- Fluid Control Products

Insulating Gasket Sets

Insulating Range

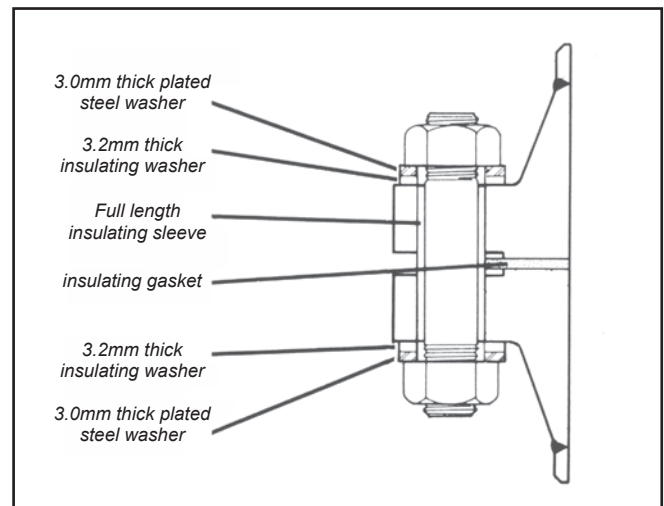
Type E Full Face

- Full face gasket.
- **Materials:**
 - 3.2mm. thick neoprene faced phenolic*. or KLINGERSil C4430 (3.0mm).
- Insulating sleeve, polyethylene, phenolic or mylar.
- Insulating washer, reinforced phenolic.



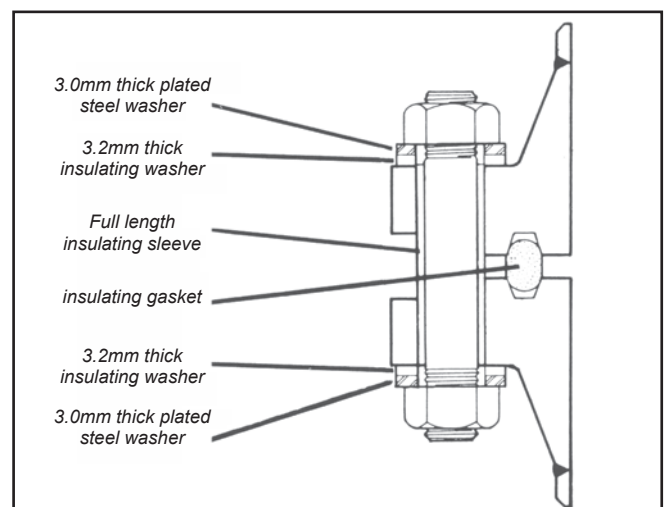
Type F Raised Face

- Inner bolt circle flat gasket.
- **Materials:**
 - 3.2mm. thick neoprene faced reinforced phenolic*. or KLINGERSil C4430 (3.0mm).
- Insulating sleeve, polyethylene, phenolic or mylar.
- Insulating washer, reinforced phenolic.



Type D Ring Groove

- Oval central gasket.
- Used on ring-joint flanges.
- Only available in reinforced phenolic.
- Insulating sleeve, polyethylene, phenolic or mylar.
- Insulating washer reinforced phenolic.



* Unless otherwise specified, this gasket material will be supplied.